

PLAT I I OF MARINER VILLAGE, P. U. D. (R)

IN PART OF SEC. 31, TWP. 38S, RGE. 42E,
SEC. 1, TWP. 39S, RGE. 41E,
AND SEC. 6, TWP. 39S, RGE. 42E
MARTIN COUNTY, FLORIDA

CUNNINGHAM & DURRANCE
CONSULTING ENGINEERS, INC.
WEST PALM BEACH, FLORIDA

STATE OF FLORIDA
COUNTY OF MARTIN
I, MARINA STILLER, CLERK OF THE CIRCUIT
COUNTY OF MARTIN COUNTY, FLORIDA HEREBY
CERTIFY THAT THIS PLAT WAS FILED FOR
RECORD IN PLAT BOOK 12, PAGE 95
MARTIN COUNTY, FLORIDA PUBLIC RECORDS
THIS 22 DAY OF 2011.
MARINA STILLER, CLERK
CIRCUIT COURT
MARTIN COUNTY, FLORIDA
FILE NUMBER: 1021855

PLAT I OF
MARINER VILLAGE, P. U. D.
PLAT BOOK 12, PAGE 95

METLAND PRESERVE
EASEMENT
0.291 ACRES

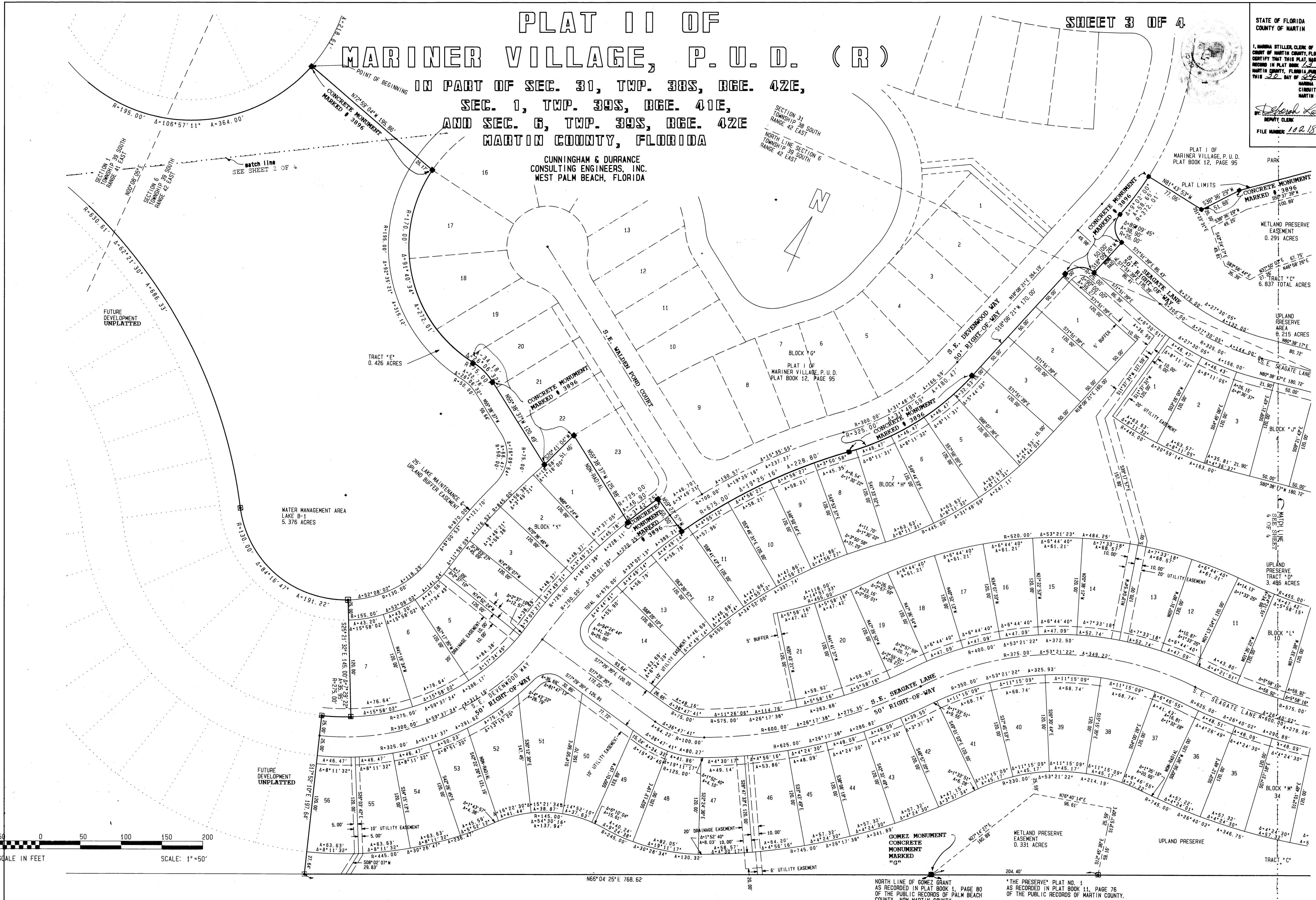
UPLAND PRESERVE
AREA
0.215 ACRES

TRACT "C"
6.837 TOTAL ACRES

UPLAND PRESERVE
TRACT "D"
3.486 ACRES

METLAND PRESERVE
EASEMENT
0.331 ACRES

UPLAND PRESERVE



N66°04'25\"/>

NORTH LINE OF GOMEZ GRANT
AS RECORDED IN PLAT BOOK 1, PAGE 80
OF THE PUBLIC RECORDS OF PALM BEACH
COUNTY, NOW MARTIN COUNTY.

THE PRESERVE PLAT NO. 1
AS RECORDED IN PLAT BOOK 11, PAGE 76
OF THE PUBLIC RECORDS OF MARTIN COUNTY.